



 **Husqvarna**<sup>®</sup>



LF 160DI

---

## Contents

---

|                   |   |   |    |
|-------------------|---|---|----|
| Introduction..... | 2 | Maintenance.....                          | 11 |
| Safety.....       | 4 | Transportation, storage and disposal..... | 17 |
| Operation.....    | 8 | Technical data.....                       | 19 |

---

## Introduction

---

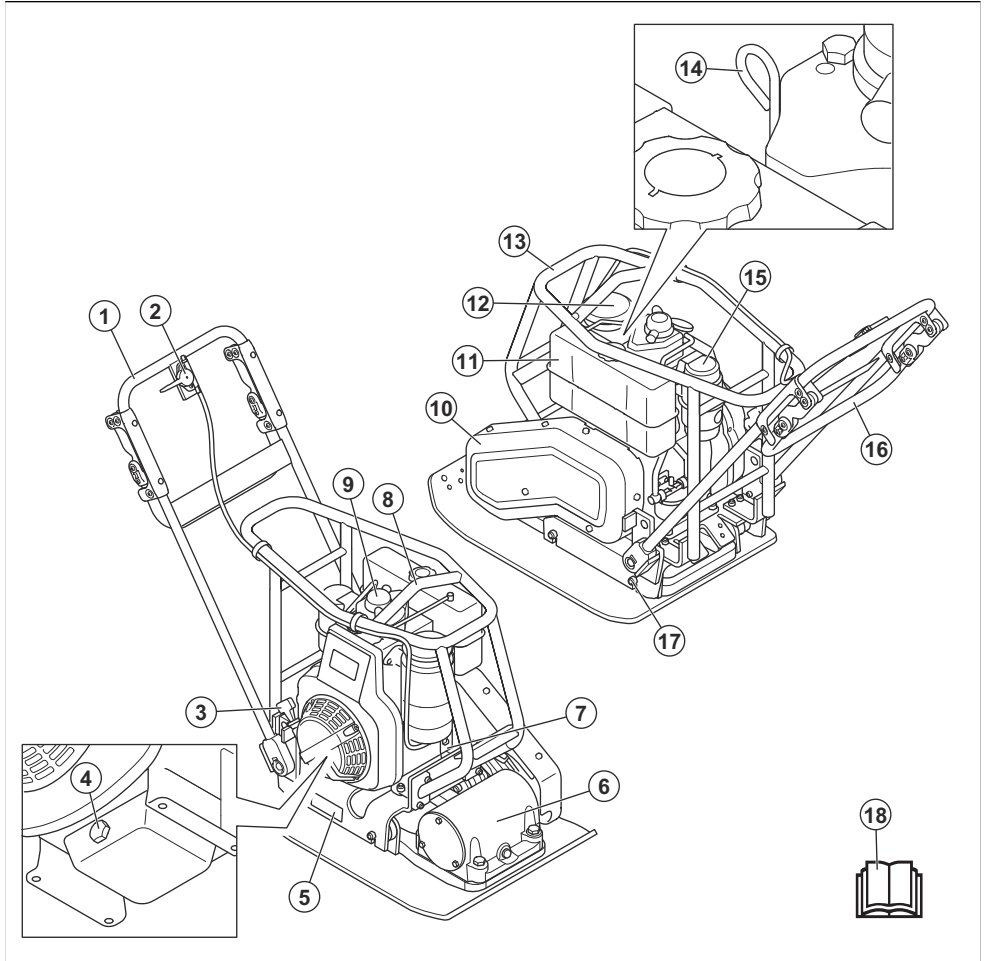
### Product description

The product is a walk-behind forward plate compactor with a combustion engine. The product is used for compaction of thin to moderately thick layers of granular soils. With the optional water tank, the product can also be used for compaction of asphalt.

### Intended use

The product is for professional operation only. Use the product for repairs and maintenance of driveways, paths and parking lots. With the optional block paving kit the product can also be used for block paving. Do not use the product for other tasks.

# Product overview



- 1. Upper handle
- 2. Throttle control
- 3. Starter rope handle
- 4. Oil drain plug for the engine oil
- 5. Type plate
- 6. Eccentric element
- 7. Stop level
- 8. Lifting point
- 9. Engine oil cap
- 10. V-belt cover
- 11. Fuel tank
- 12. Air filter
- 13. Safety frame

- 14. Oil dipstick
- 15. Muffler
- 16. Lift handle
- 17. Vibration damping units
- 18. Operator's manual

## Symbols on the product



**WARNING:** Be careful and use the product correctly. This product can cause serious injury or death to the operator or others.



Read the manual carefully and make sure that you understand the instructions before you use the product.



Read the manual carefully and make sure that you understand the instructions before you use the product.



Ultra-low-sulfur diesel fuel only



Use hearing protection.



Risk of injury. Be careful around the drive belt.



Hot surface.



Keep your hands away from this area.



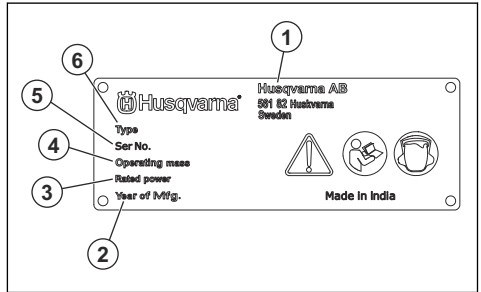
Lifting point on the safety frame.



Do not attach the lifting equipment at this point. (LF 160D)

**Note:** Other symbols/decals on the product refer to special certification requirements for some markets.

## Type plate



1. Manufacturer
2. Production year
3. Rated power
4. Product weight
5. Serial number
6. Product type

## Product liability

As referred to in the product liability laws, we are not liable for damages that our product causes if:

- the product is incorrectly repaired.
- the product is repaired with parts that are not from the manufacturer or not approved by the manufacturer.
- the product has an accessory that is not from the manufacturer or not approved by the manufacturer.
- the product is not repaired at an approved service center or by an approved authority.

## Safety

### Safety definitions

Warnings, cautions and notes are used to point out specially important parts of the manual.



**WARNING:** Used if there is a risk of injury or death for the operator or bystanders if the instructions in the manual are not obeyed.



**CAUTION:** Used if there is a risk of damage to the product, other materials or the adjacent area if the instructions in the manual are not obeyed.

**Note:** Used to give more information that is necessary in a given situation.

## General safety instructions

---



**WARNING:** Read the warning instructions that follow before you use the product.

---

- This product is a dangerous tool if you are not careful or if you use the product incorrectly. This product can cause serious injury or death to the operator or others. Before you use the product, you must read and understand the contents of this operator's manual.
  - Save all warnings and instructions.
  - Comply with all applicable laws and regulations.
  - The operator and the employer of the operator must know and prevent the risks during operation of the product.
  - Do not let a person operate the product unless they read and understand the contents of the operator's manual.
  - Do not operate the product unless you receive training before use. Make sure that all operators receive training.
  - Do not let a child operate the product.
  - Only let approved persons operate the product.
  - The operator is responsible for accidents that occur to other persons or their property.
  - Do not use the product if you are tired, ill, or under the influence of alcohol, drugs or medicine.
  - Always be careful and use your common sense.
  - This product produces an electromagnetic field during operation. This field can under some circumstances interfere with active or passive medical implants. To decrease the risk of serious injury or death, we recommend persons with medical implants to speak to their physician and the medical implant manufacturer before operating this product.
  - Keep the product clean. Make sure that you can clearly read signs and decals.
  - Do not use the product if it is defective.
  - Do not do modifications to this product.
  - Do not operate the product if it is possible that other persons have done modifications to the product.
- Use personal protective equipment. Refer to *Personal protective equipment on page 6*.
  - Make sure that only approved persons are in the work area.
  - Keep the work area clean and bright.
  - Make sure that you are in a safe and stable position during operation.
  - Make sure that there is no risk that you or the product can fall from a height.
  - Make sure that there is no grease or oil on the handle.
  - Do not use the product in areas where fire or explosions can occur.
  - The product can cause objects to eject at high speed. Make sure that all persons in the work area use approved personal protective equipment. Remove loose objects from the work area.
  - Before you go away from the product, stop the engine and make sure that there is no risk of accidental start.
  - Make sure that clothes, long hair and jewelry do not get caught in moving parts.
  - Do not sit on the product.
  - Do not hit the product.
  - Always operate the product from behind with your hands on the handle.
  - Do not operate the product near electrical cables. The product does not have electrical insulation and injury or death can occur.
  - Before you operate the product, find out if there are hidden wires, cables and pipes in the work area. If the product hits a hidden object, stop the engine immediately and examine the product and the object. Do not start to operate the product again until you know that it is safe to continue.

## Safety instructions for operation

---



**WARNING:** Read the warning instructions that follow before you use the product.

---

- Make sure that you know how to stop the engine quickly in an emergency.
  - The operator must have the physical strength that is necessary to operate the product safely.
  - Do not operate the product without all protective covers installed.
- During operation of the product, vibrations go from the product to the operator. Regular and frequent operation of the product can cause or increase the degree of injuries to the operator. Injuries can occur in fingers, hands, wrists, arms, shoulders, and/or nerves and blood supply or other body parts. The injuries can be debilitating and/or permanent, and can increase gradually during weeks, months or years. Possible injuries include damage to the blood circulation system, the nervous system, joints, and other body structures.
  - Symptoms can occur during operation of the product or at other times. If you have symptoms and continue to operate the product, the symptoms can increase or become permanent. If these or other symptoms occur, get medical aid:

## Vibration safety

---



**WARNING:** Read the warning instructions that follow before you use the product.

---

- Numbness, loss of feeling, tingling, pricking, pain, burning, throbbing, stiffness, clumsiness, loss of strength, changes in skin color or condition.
- Symptoms can increase in cold temperatures. Use warm clothing and keep your hands warm and dry when you operate the product in cold environments.
- Do maintenance on and operate the product as given in the operator's manual, to keep a correct vibration level.
- The product has a vibration damping system that decreases the vibrations from the handles to the operator. Let the product do the work. Do not push the product with force. Hold the product at the handles lightly, but make sure that you control the product and operate it safely. Do not push the handles into the end stops more than necessary.
- Keep your hands on the handle or handles only. Keep all other body parts away from the product.
- Stop the product immediately if strong vibrations suddenly occurs. Do not continue the operation before the cause of the increased vibrations is removed.

## Dust safety



**WARNING:** Read the warning instructions that follow before you use the product.

- Operation of the product can cause dust in the air. Dust can cause serious injury and permanent health problems. Silica dust is regulated as harmful by several authorities. These are examples of such health problems:
  - The fatal lung diseases chronic bronchitis, silicosis and pulmonary fibrosis
  - Cancer
  - Birth defects
  - Skin inflammation
- Use correct equipment to decrease the quantity of dust and fumes in the air and to decrease dust on work equipment, surfaces, clothing and body parts. Examples of controls are dust collection systems and water sprays to bind dust. Decrease dust at the source where possible. Make sure that the equipment is correctly installed and used and that regular maintenance is done.
- Use approved respiratory protection. Make sure that the respiratory protection is applicable for the dangerous materials in the work area.
- Make sure that the airflow is sufficient in the work area.
- If it is possible, point the exhaust of the product where it cannot cause dust to go into the air.

## Exhaust fumes safety



**WARNING:** Read the warning instructions that follow before you use the product.

- The exhaust fumes from the engine contain carbon monoxide which is an odourless, poisonous and very dangerous gas. To breathe carbon monoxide can cause death. Because carbon monoxide is odourless and cannot be seen, it is not possible to sense it. A symptom of carbon monoxide poisoning is dizziness, but it is possible that a person becomes unconscious without warning if the quantity or concentration of carbon monoxide is sufficient.
- Exhaust fumes also contain unburned hydrocarbons including benzene. Long-term inhalation can cause health problems.
- Exhaust fumes that you can see or smell also contain carbon monoxide.
- Do not use a combustion engine product indoors or in areas that do not have sufficient airflow.
- Do not breathe the exhaust fumes.
- Make sure that the airflow in the work area is sufficient. This is very important when you operate the product in trenches or other small work areas where exhaust fumes can easily collect.

## Noise safety



**WARNING:** Read the warning instructions that follow before you use the product.

- High noise levels and long-term exposure to noise can cause noise-induced hearing loss.
- To keep the noise level to a minimum, do maintenance on and operate the product as given in the operator's manual.
- Examine the muffler for damages and defects. Make sure that the muffler is correctly attached to the product.
- Use approved hearing protection while you operate the product.
- Listen for warning signals and voices when you use hearing protection. Remove the hearing protection when the product is stopped, unless hearing protection is necessary for the noise level in the work area.

## Personal protective equipment



**WARNING:** Read the warning instructions that follow before you use the product.

- Always use approved personal protective equipment when you operate the product. Personal protective equipment cannot fully prevent injury but it

decreases the degree of injury if an accident does occur. Let your dealer help you select the correct personal protective equipment.

- Regularly do a check of the condition of the personal protective equipment.
- Use an approved protective helmet.
- Use approved hearing protection.
- Use approved respiratory protection.
- Use approved eye protection with side protection.
- Use approved gloves.
- Use boots with steel toe-cap and non-slip sole.
- Use approved work clothing or equivalent close-fitting clothing that has long sleeves and long legs.

### Fire extinguisher

- Keep a fire extinguisher near during operation.
- Use a powder fire extinguisher of "ABE" class or a carbon dioxide fire extinguisher of "BE" type.

### Safety devices on the product

---



**WARNING:** Read the warning instructions that follow before you use the product.

- Do not use a product with defective safety devices.
- Do a check of the safety devices regularly. If the safety devices are defective, speak to your Husqvarna service agent.

### Muffler

The muffler keeps the noise levels to a minimum and sends the exhaust fumes away from the operator.

Do not use the product if the muffler is missing or defective. A defective muffler increases the noise level and the risk of fire.



**WARNING:** The muffler becomes very hot during and after use and when the engine operates at idle speed. Be careful near flammable materials and/or fumes to prevent fire.

### To do a check of the muffler

- Examine the muffler regularly to make sure that it is attached correctly and not damaged.

### Safety frame

The safety frame prevents damage to the product if it falls. The handle and the lifting point are parts of the safety frame.

### To do a check of the safety frame

- Make sure that there are no cracks or other damages on the safety frame.

- Make sure that the safety frame is correctly installed on the product.

### Vibration damping units

The vibration damping units decrease vibration in the product. The vibration damping units decrease harmful vibrations to prevent injury to the operator and damage to the product.

### To do a check of the vibration damping units

There are 4 vibration damping units, 2 on the left side and 2 on the right side of the product.

- Make sure that the vibration damping units are correctly installed.
- Examine the vibration damping units for damages and wear.
- Replace the vibration damping units if it is necessary.

### Fuel safety

---



**WARNING:** Read the warning instructions that follow before you use the product.

- Fuel is flammable and the fumes are explosive. Be careful with fuel to prevent injury, fire and explosion.
- Do not breathe in the fuel fumes. The fuel fumes are poisonous and can cause injury. Make sure that the airflow is sufficient.
- Do not remove the fuel tank cap or fill the fuel tank when the engine is on.
- Let the engine become cool before you refuel.
- Do not fill fuel in an indoor area. Not sufficient airflow can cause injury or death because of asphyxiation or carbon monoxide.
- Do not smoke near the fuel or the engine.
- Do not put hot objects near the fuel or the engine.
- Do not fill fuel near sparks or flames.
- Before you refuel, open the fuel tank cap slowly and release the pressure carefully.
- Fuel on your skin can cause injury. If you get fuel on your skin, use soap and water to remove the fuel.
- If you spill fuel on your clothing, change clothing immediately.
- Do not fill the fuel tank fully. Heat causes the fuel to expand. Keep a space at the top of the fuel tank.
- Tighten the fuel tank cap fully. If the fuel tank cap is not tightened, there is a risk of fire.
- Before you start the product, move the product to a minimum of 3 m/10 ft from where you refueled.
- Do not start the product if there is fuel or engine oil on the product. Remove the unwanted fuel and engine oil and let the product dry before you start the engine.

- Examine the engine for leaks regularly. If there are leaks in the fuel system, do not start the engine until the leaks are repaired.
- Do not use your fingers to examine the engine for leaks.
- Keep fuel in approved containers only.
- When the product and fuel is in storage, make sure that fuel and fuel fumes cannot cause damage.
- Drain the fuel in an approved container outdoors and away from sparks and flames.

### Safety instructions for operation on slopes



**WARNING:** Read the warning instructions that follow before you use the product.

- Do not operate the product on a slope that is more than 20°. Loose ground, vibrations and the operation speed can cause the product to fall on a slope that is less than 20°.
- Make sure that the work area is safe. Wet and loose soil decreases safe operation of the product. Be very careful on slopes and rough surfaces.
- Make sure that all persons in the work area are above the product on the slope.
- Operate the product up and down the slope, not from side to side.
- Do not park the product on a slope. If you must park the product on a slope, make sure that the product cannot fall. There is a risk of injury and damage.

### Safety instructions for operation near edges



**WARNING:** Read the warning instructions that follow before you use the product.

- There is a risk that the product falls when you operate it near an edge. Always keep a minimum of ¾ of the product on a surface that is sufficiently stable to hold the product weight.
- If the product falls, stop the engine before you lift the product back to a surface that is sufficiently stable. Refer to *To stop the product on page 11*.

## Safety instructions for maintenance



**WARNING:** Read the warning instructions that follow before you use the product.

- If the maintenance is not done correctly and regularly, the risk of injury and damage to the product increases.
- Use personal protective equipment. Refer to *Personal protective equipment on page 6*.
- Stop the engine and make sure that all parts of the product are cool before you do the maintenance.
- Clean the product to remove dangerous material before you do the maintenance.
- Disconnect the spark plug cap before you do the maintenance.
- The exhaust fumes from the engine are hot and can contain sparks. Do not operate the product in indoor areas or near flammable material.
- Do not change the product. Modifications that are not approved by the manufacturer, can cause serious injury or death.
- Always use original accessories and spare parts. Accessories and spare parts that are not approved by the manufacturer, can cause serious injury or death.
- Replace damaged, worn or broken parts.
- Only do the maintenance as given in this operator's manual. Let an approved service center do all other servicing.
- Remove all tools from the product before you start the engine after maintenance. Loose tools or tools attached to rotating parts can eject and cause injury.
- After maintenance, do a check of the vibration level in the product. If it is not correct, speak to an approved service center.
- Let an approved service center do servicing on the product regularly.

## Operation

### Introduction



**WARNING:** Read and understand the safety chapter before you use the product.

### To do before you operate the product

- Read the operator's manual carefully and make sure that you understand the instructions.

### To fill fuel



**CAUTION:** Always use correct fuel type. Incorrect fuel type causes damage to

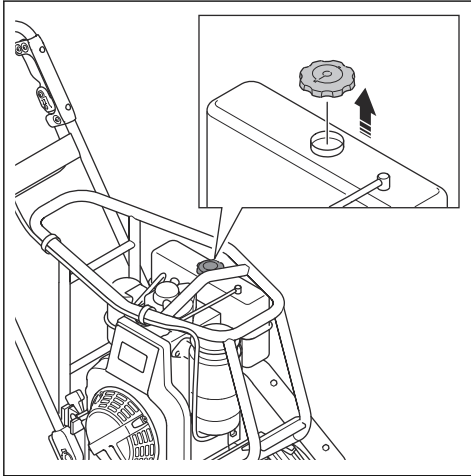


the product. Refer to *Technical data on page 19* for the correct fuel.

## To start the product

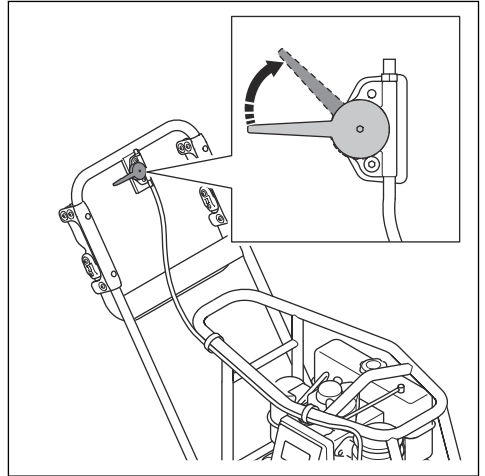
For more information about the fuel, refer to the engine manual supplied by the engine manufacturer.

1. Open the fuel tank cap slowly to release the pressure.

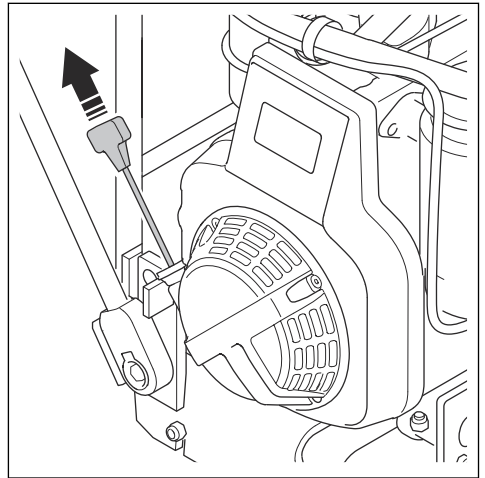


2. Fill slowly with a fuel can. If you spill fuel, remove it with a cloth and let the remaining fuel dry off.
3. Clean the area around the fuel tank cap.
4. Tighten the fuel tank cap fully. If the fuel tank cap is not tightened, there is a risk of fire.
5. Start the engine, refer to *To start the product on page 9*. Keep the throttle control in idle position for some minutes and let the engine become warm.

1. Set the throttle control to low speed.

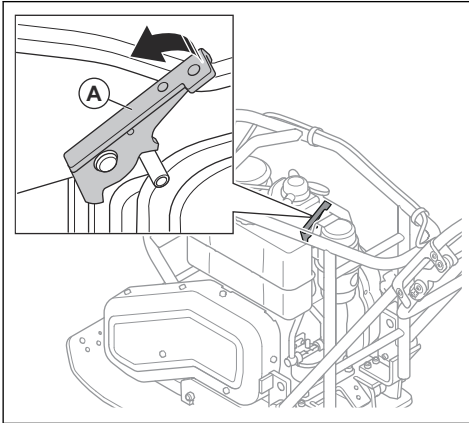


2. Pull the starter rope handle slowly until you feel resistance.



3. Release the starter rope handle to let the starter rope go back.

4. Pull the decompression lever (A) up. Make sure that the decompression lever is in vertical position.



5. Pull the starter rope quickly.
6. Release the starter rope handle to let the starter rope go back.
7. Pull the starter rope handle until the engine starts.

**Note:** If the engine does not start, refer to the engine manual.

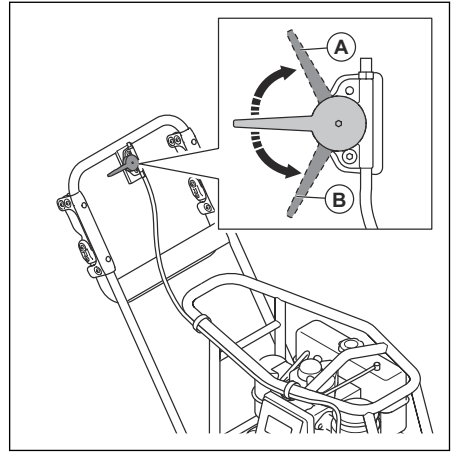
## To operate the product



**CAUTION:** Always operate the product forward and at full throttle. Lower engine speed and rearward movement prevent correct function of the eccentric element and can cause product failure.

1. Make sure that the throttle control is set to full throttle.

**Note:** Turn the throttle lever in direction (A) to decrease the speed and in direction (B) to increase the speed.

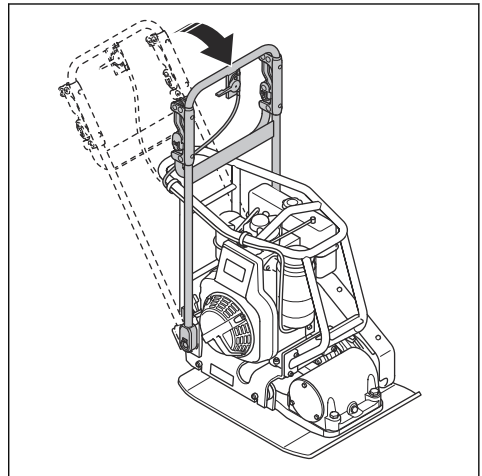


2. Carefully push the product forward.



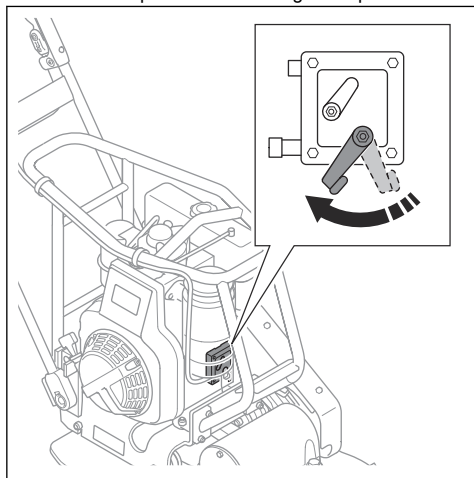
**CAUTION:** Do not push the product down. Too much pressure can cause unsatisfactory result.

3. To turn the product, lift the handle to a 90° angle in direction to the ground.



## To stop the product

- Push the stop lever until the engine stops.



## Maintenance

### Introduction



**WARNING:** Read and understand the safety chapter before you do maintenance on the product.

### Maintenance schedule

\* = General maintenance done by the operator. The instructions are not given in this operator's manual.

X = The instructions are given in this operator's manual.

O = Refer to the engine manual for instructions.

| General product maintenance  | Before use, each 10 h | After the first 20 h | Weekly, each 100 h | After 6 months or, each 250 h |
|--|-----------------------|----------------------|--------------------|-------------------------------|
| Make sure that there are no fuel or oil leaks.   | *                     |                      |                    |                               |
| Clean the product.   | X                     |                      |                    |                               |
| Make sure that nuts and screws are tightened.  | *                     |                      |                    |                               |
| Examine the throttle control and choke control for damage.   | *                     |                      |                    |                               |
| Make sure that the throttle control and the choke control can move smoothly.                       | *                     |                      |                    |                               |
| Replace the oil for the eccentric element.   |                       | X                    |                    | X                             |
| Examine the vibration damping units for damage.  |                       |                      | X                  |                               |
| Examine the tension of the V-belt and look for damages. Adjust or replace the V-belt as necessary. |                       |                      | X                  |                               |

| General product maintenance                                   | Before use, each 10 h | After the first 20 h | Weekly, each 100 h | After 6 months or, each 250 h |
|---|-----------------------|----------------------|--------------------|-------------------------------|
| Replace the recoil spring, thrust spring and tooth of recoil. |                       |                      | X                  |                               |

| Engine maintenance   | Before use, each 10 h | After the first 20 h | Weekly, each 100 h | After 6 months or, each 250 h | Yearly, each 500 h |
|--|-----------------------|----------------------|--------------------|-------------------------------|--------------------|
| Do a check of the fuel level and the engine oil level.   | X                     |                      |                    |                               |                    |
| Clean the cooling fins of the engine.  |                       |                      |                    | O                             |                    |
| Examine the air filter. Clean the air filter if it is necessary.   | O                     |                      |                    |                               |                    |
| Clean the air filter.  | X                     |                      |                    |                               |                    |
| Replace the air filter.  |                       |                      |                    | X                             |                    |
| Replace the engine oil.  |                       | X                    | X                  |                               |                    |
| Do a check of the engine speed.  |                       | O                    | O                  |                               |                    |
| Adjust the valve head clearance for the air intake and the exhaust valves.   |                       | O                    | O                  |                               |                    |
| Drain the fuel and clean the fuel tank and the fuel filter.  |                       |                      | O                  |                               |                    |
| Replace the fuel filter.   |                       |                      |                    | O                             |                    |
| Do a check and put grease on the controls and couplings.   |                       |                      |                    | *                             |                    |
| Do a check of the injection pump.  |                       |                      |                    | O                             |                    |
| Do a check of the fuel injector.   |                       |                      |                    | O                             |                    |
| Clean the exhaust pipe of the engine.  |                       |                      |                    | O                             |                    |
| Do a check of the bearing of the eccentric element. If it is worn out, replace it with a new bearing. Use a torque wrench to replace the pulley for the bearing. |                       |                      |                    |                               | X                  |
| Drain the fuel system of water.  |                       |                      |                    |                               | O                  |
| Clean the oil stainer.   |                       |                      |                    |                               | O                  |

## To clean the product

- Use running water from a hose or a high-pressure washer to clean the product.



**CAUTION:** Do not point the water directly at the fuel tank cap, electrical components or the engine.

- Remove grease and oil from the handle.

## To do a general inspection

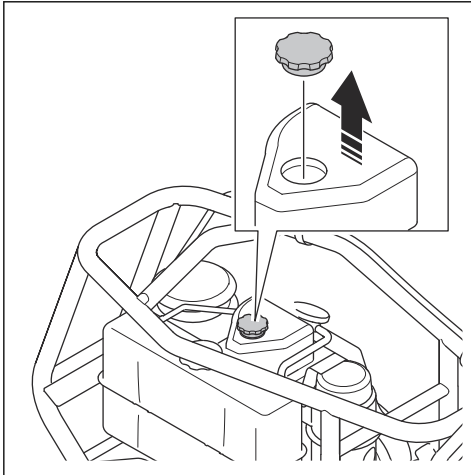
- Make sure that all nuts and screws on the product are tightened correctly.

## To do a check of the engine oil level

1. Remove the oil tank cap and dipstick.
2. Clean the oil from the dipstick.
3. Put the dipstick back fully into the oil tank.
4. Remove the dipstick.
5. Examine the oil level on the dipstick.
6. If the oil level is low, fill with engine oil and do a check of the oil level again. Refer to *Technical data on page 19* or the engine manual for the correct type of oil.

## To fill engine oil

1. Remove the engine oil cap.



2. Fill with new engine oil. Refer to *Technical data on page 19* or the engine manual for the correct type of oil.
3. Do a check of the engine oil level. Refer to *To do a check of the engine oil level on page 13*.
4. Clean around the area around the engine oil cap.
5. Tighten the engine oil cap fully.
6. Start the engine, refer to *To start the product on page 9*. Keep the throttle control in idle position for some minutes and let the engine become warm.

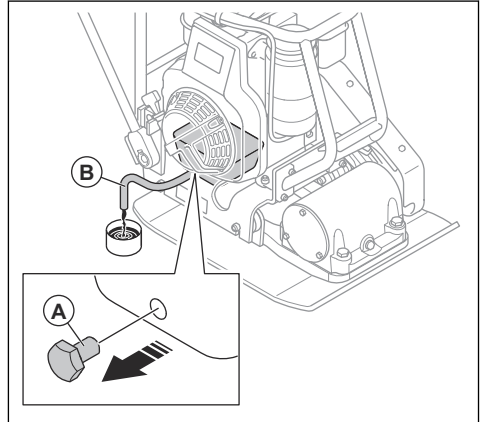
## To drain the engine oil

If the engine is cold, start the engine for 1–2 minutes before you drain the engine oil. This makes the engine oil warm and easier to drain.



**WARNING:** Engine oil is very hot directly after the engine stops. Let the engine become cool before you drain the engine oil. If you spill engine oil on your skin, clean with soap and water.

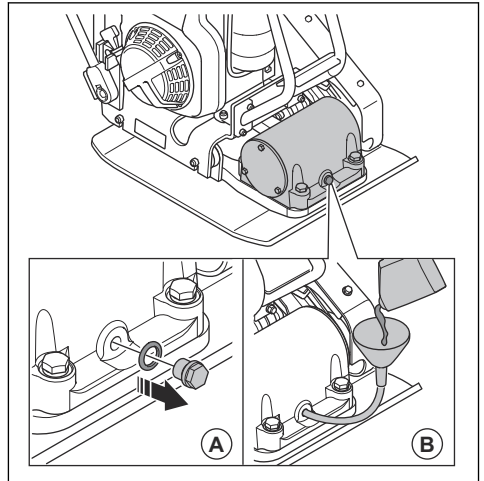
1. Put a container below the drain plug for the engine oil.
2. Remove the oil drain plug (A).



3. Tilt the product and let the oil run out into the container (B).
4. Clean around the oil drain plug.
5. Install the oil drain plug and tighten it.

## To fill the oil for the eccentric element

1. Remove the oil drain plug (A).

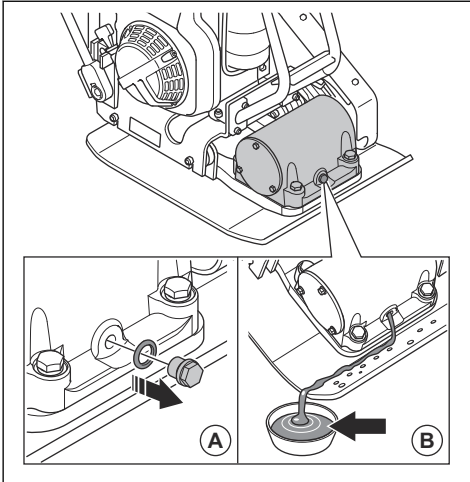


2. Make sure that the sealing surface is clean.

3. Fill with new oil for the eccentric element (B). Refer to *Technical data on page 19*.
4. Install the oil drain plug and tighten it.
5. Do a check of the oil level for the eccentric element.

## To drain the oil for the eccentric element

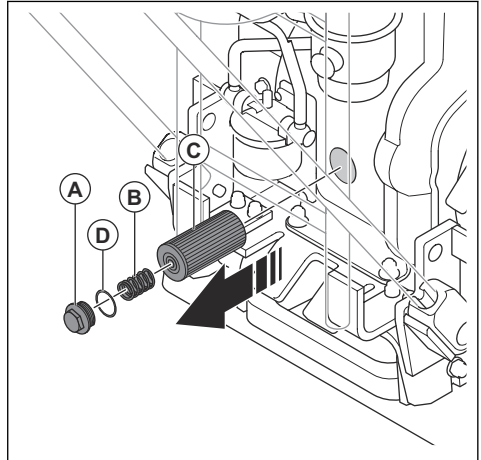
1. Put a container below the drain plug for the eccentric element
2. Remove the oil drain plug (A).



3. Tilt the product and let the oil run out into the container (B).
4. Clean the sealing surface.
5. Install the oil drain plug and tighten it.

## To replace the oil filter

1. Remove the cap (A).



2. Remove the spring (B) and the oil filter (C).
3. Use diesel fuel to clean the oil filter.
4. Clean and dry the contact surfaces between the parts.
5. Install the oil filter and the spring.
6. Examine the O-ring (D) for damages. If it is necessary, replace the O-ring.
7. Install the cap.

## Air filter



**WARNING:** Use approved respiratory protection when you clean or replace the air filter. Discard used air filters correctly. The dust in the air filter is dangerous to your health.



**CAUTION:** Always replace a damaged air filter, or the dust will go into the engine and cause engine damage.

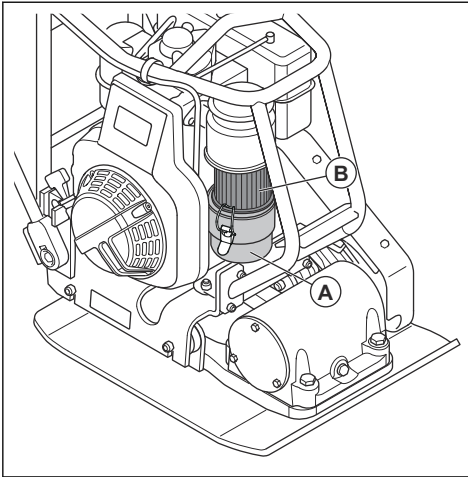
## To clean or replace the air filter



**WARNING:** Do not clean the air filter with compressed air. This causes damage to the air filter and the risk increases that you breathe the dangerous dust.

1. Open the clip on the air filter cover (A) and remove the air filter cover.

2. Remove the air filter (B).



3. Clean the air filter housing with a brush.
4. Examine the air filter for damage.
5. Tap the air filter against a hard surface or use a vacuum cleaner to remove the particles.

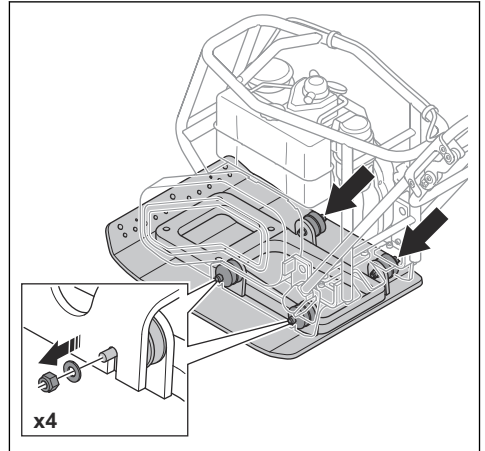


**CAUTION:** Do not let the nozzle of the vacuum cleaner touch the surface of the paper filter element. Keep a small distance. The sensitive surface of the paper filter element becomes damaged if objects touch it.

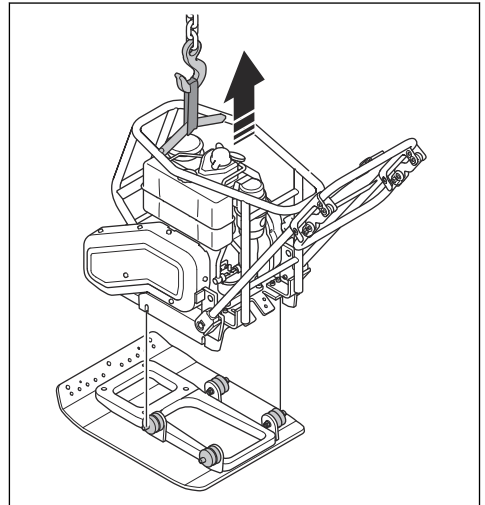
6. Install the air filter in the opposite sequence.

## To do a check of the vibration damping system

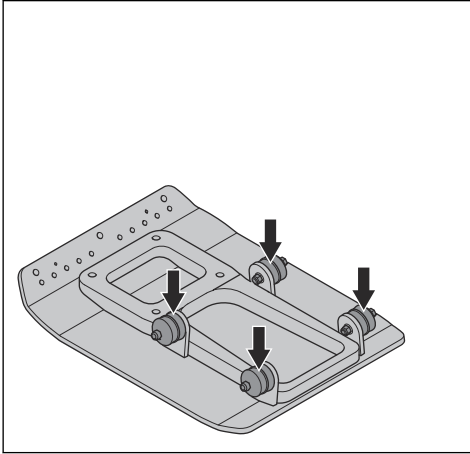
1. Loosen the 4 nuts and washers that hold the vibration damping units.



2. Attach lifting equipment at the lifting point. Lift the product from the bottom plate.



3. Make sure that there are no cracks or deformation on the 4 vibration damping units.



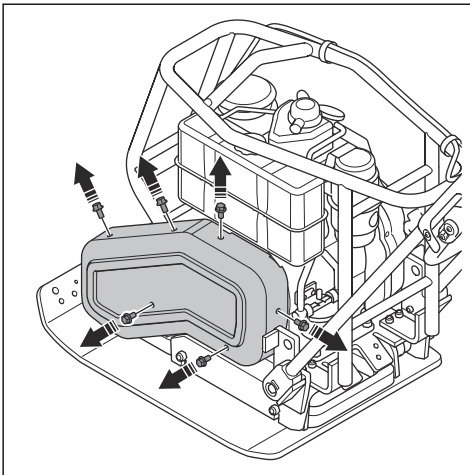
4. Replace the vibration damping units if they are damaged.
5. Install the product to the bottom plate.
6. Install and tighten the 4 nuts and washers that hold the vibration damping units.

## To do a check of the V-belt

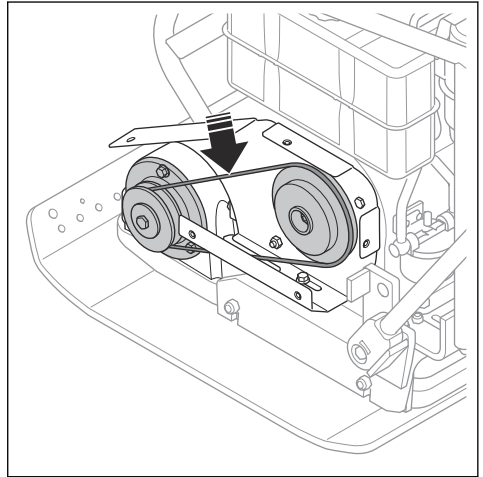


**WARNING:** Do not operate the product without the V-belt cover installed.

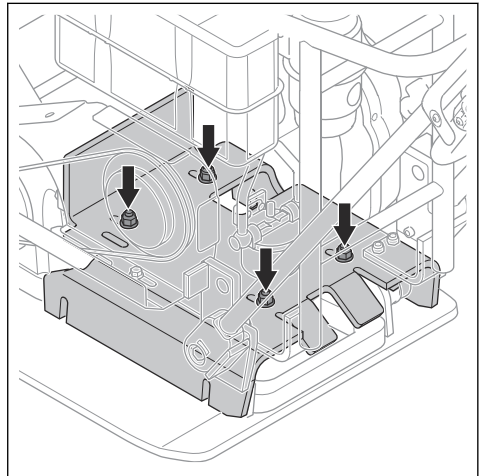
1. Stop the engine. Refer to *To stop the product on page 11*.
2. Loosen and remove the 6 screws on the V-belt cover. Remove the V-belt cover.



3. Examine the V-belt for damages and wear. Replace the V-belt if it is necessary.
4. Examine the tension of the V-belt.

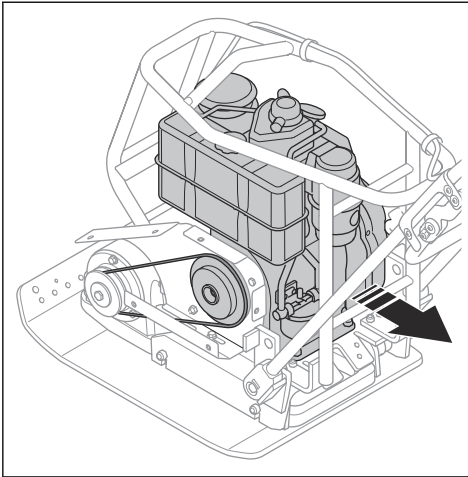


5. If the tension is not sufficient, do these steps:
  - a) Loosen the 4 bolts that hold the engine to the bottom plate.





b) Move the engine rearward.

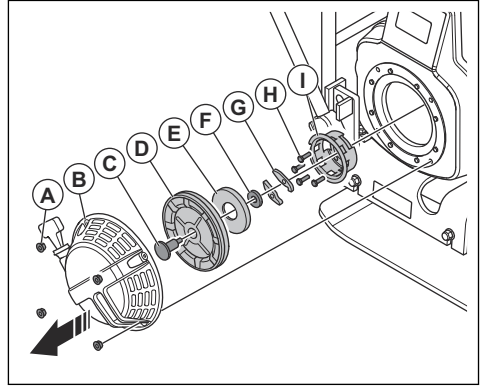


c) Make sure that the V-belt pulleys align and tighten the 4 bolts.

6. Install the V-belt cover.

## To replace the recoil spring, the thrust spring and the teeth of the recoil

1. Remove the 4 screws (A).



2. Remove the starter assembly (B).

3. Remove the bolt (C).

4. Remove and discard the recoil spring (D).

5. Remove the washer (E).

6. Remove and discard the thrust spring (F).

7. Remove and discard the 2 teeth of the recoil (G).

8. Remove the 4 screws (H) and the starter housing (I).

9. Use diesel fuel to clean the parts in the assembly.

10. Install the assembly in the opposite sequence.

## Transportation, storage and disposal

### Transportation



**WARNING:** Be careful during transportation. The product is heavy and can cause injury if it falls.

### To lift the product

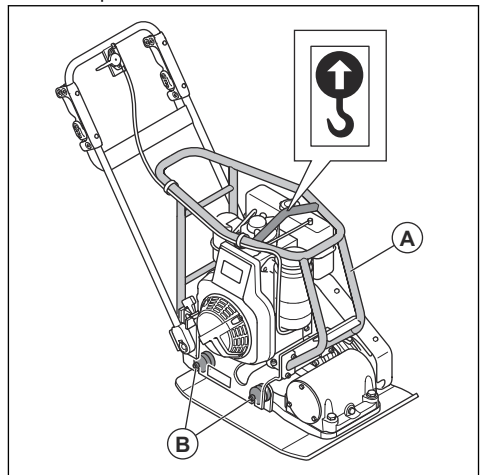


**WARNING:** Make sure that the lifting equipment has the correct specification to lift the product safely. The type plate on the product shows the product weight.



**WARNING:** Do not walk or stay below or near a lifted product.

- Attach the lifting equipment at the lifting point of the safety frame. A label on the product identifies the correct position.





**WARNING:** Do not use metal hooks, chains or other lifting equipment with rough edges that can cause damage to the lifting eye.

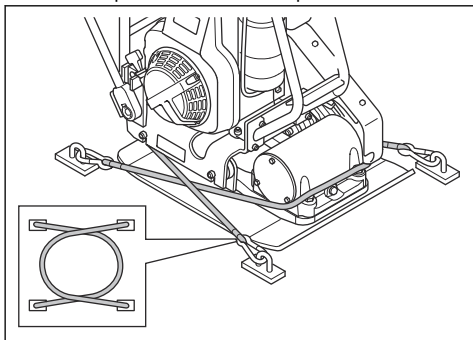


**WARNING:** Do not lift a damaged product. Make sure that the safety frame (A) and the vibration damping units (B) are correctly installed and not damaged.

- When the product is no longer in use, send it to a Husqvarna dealer or discard it at a recycling location.

## To safely the product to a transportation vehicle with tie-down straps

- Put 2 straps around the bottom plate.



- a) Put 1 strap around the front of the bottom plate and attach the strap to the vehicle.
- b) Put 1 strap around the rear of the bottom plate and attach the strap to the vehicle.

## Storage

- Remove all fuel from the fuel tank before you put the product in storage for a long period of time. Discard the fuel at an applicable disposal location.
- Clean the product before storage. Remove oil and dust from the rubber parts.
- Clean the air filter before storage.
- Carefully pull the starter rope handle until there is a small resistance. This closes the valves and makes sure that moisture cannot go into the engine cylinder.
- Put a protective cover on the product.
- Keep the product in a dry and frost free area.
- Keep the product in a locked area to prevent access for children or persons that are not approved.

## Disposal

- Obey the local recycling requirements and applicable regulations.
- Discard all chemicals, such as engine oil or fuel, at a service center or at an applicable disposal location.

---

## Technical data

---

### Technical data

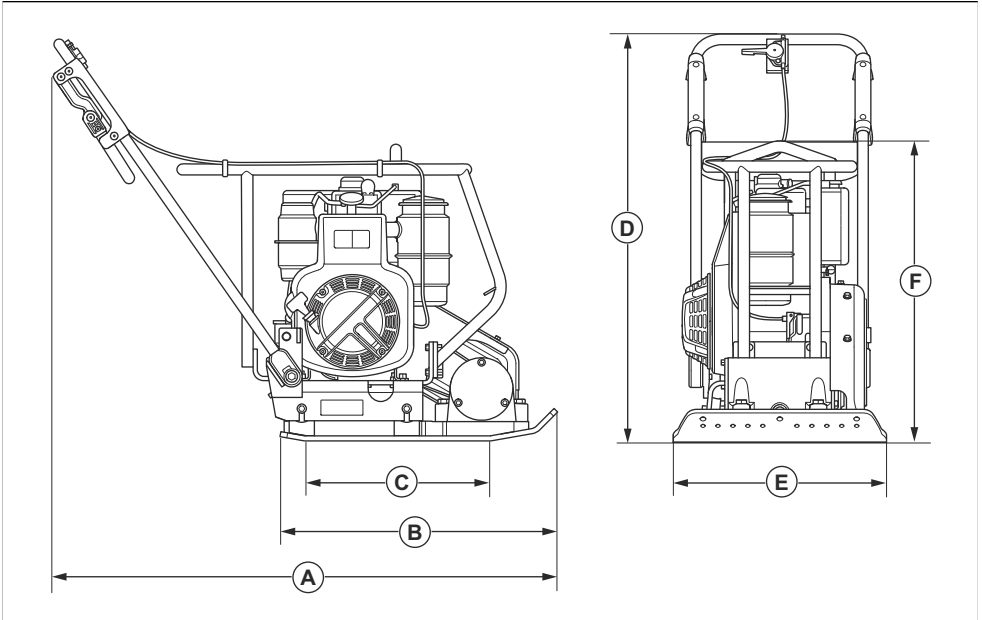
|                                       |                          |
|---------------------------------------|--------------------------|
| Weight, without water tank, kg/lb     | 160/352.7                |
| Operation weight, kg/lb               | 162/385.8                |
| Engine brand, type                    | Greaves 1520, 4 stroke   |
| Engine power, kW/hp @rpm <sup>1</sup> | 3.2/4.4 @3000            |
| Vibration frequency, Hz/rpm           | 85/5100                  |
| Amplitude, mm/in.                     | 1.27/0.05                |
| Centrifugal force, kN/lbf             | 25/5620                  |
| Operation speed, m/min or ft./min     | 20 or 65.6               |
| Max. tilt, degrees                    | 15                       |
| Fuel tank capacity, l/qts             | 4.5/4.75                 |
| Engine oil capacity *, l/qts          | 1/1.05                   |
| Oil for the eccentric element, l/qts  | 0.2/0.21                 |
| Fuel consumption, l/h or qts/h*       | x                        |
| Water tank for asphalt, l/gal         | 13/13.74                 |
| Fuel *                                | Diesel                   |
| Engine oil *                          | SAE 10W-30, API Class SJ |

\* = For further information and questions about this specific engine, refer to the engine manual or the web site of the engine manufacturer.

---

<sup>1</sup> As specified by the engine manufacturer. The power rating of the engine indicated is the average net output (at specified rpm) of a typical production engine for the engine model measured to SAE standard J1349/ISO1585. Mass production engines may differ from this value. Actual power output for the engine installed on the final product will depend on the operating speed, environmental conditions and other values.

## Product dimensions



|          |   |           |          |                       |           |
|----------|---|-----------|----------|-----------------------|-----------|
| <b>A</b> | Length including handle, mm/in.                         | 1212/47.7 | <b>D</b> | Handle height, mm/in. | 1130/44.5 |
| <b>B</b> | Length bottom plate, mm/in.                             | 1114/43.8 | <b>E</b> | Width                 | 500/19.7  |
| <b>C</b> | Length bottom plate contact area, m <sup>2</sup> /sq.ft | 0.22/2.39 | <b>F</b> | Hight, mm/in.         | 738/29    |









[www.husqvarnacp.com](http://www.husqvarnacp.com)

Original instructions

1143009-26



2022-02-11