

K2500

Reservdelar

Spare parts

Ersatzteile

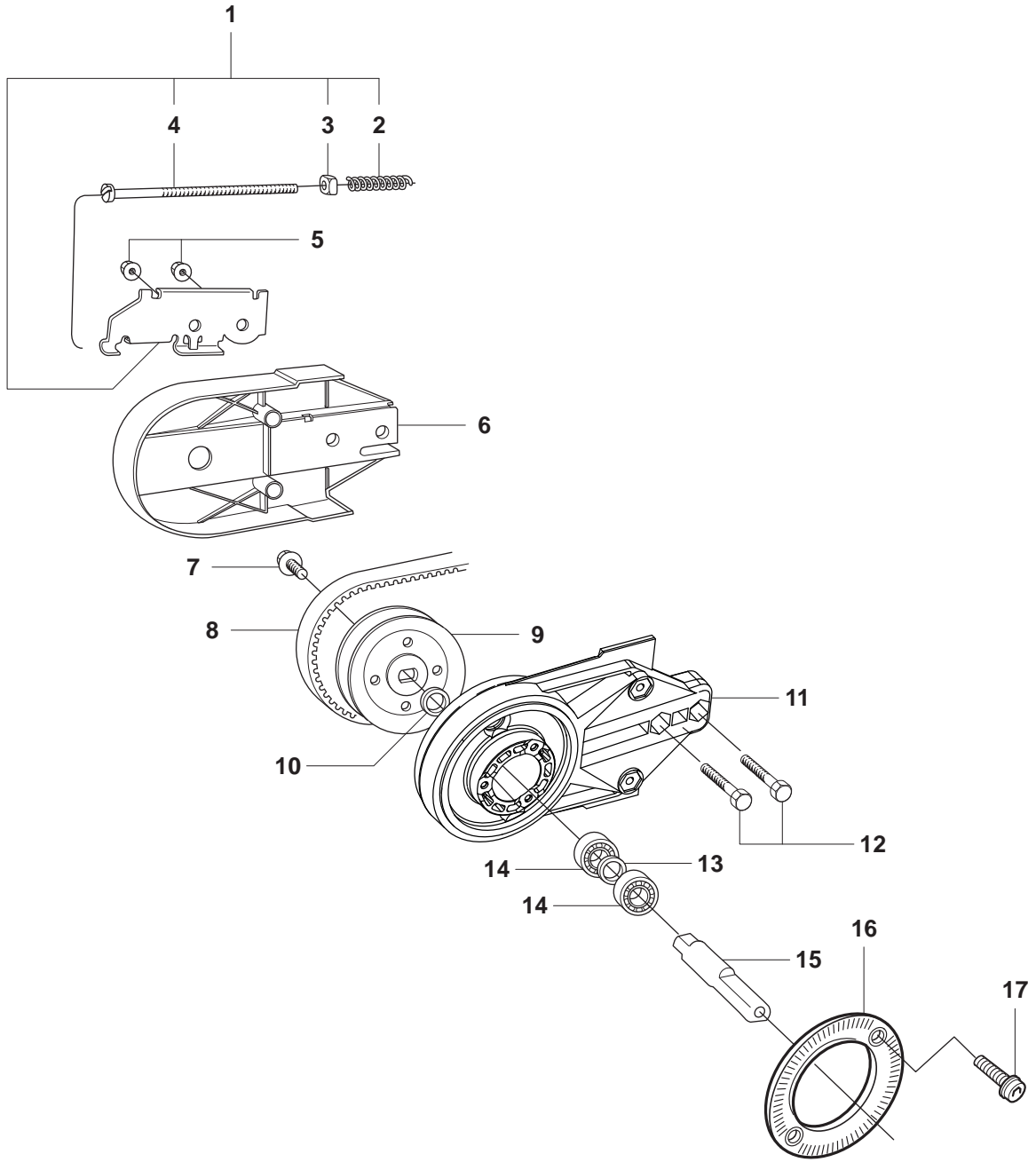
Pieces de rechange

Piezas de repuesto

Ricambi

Peças sobresselente

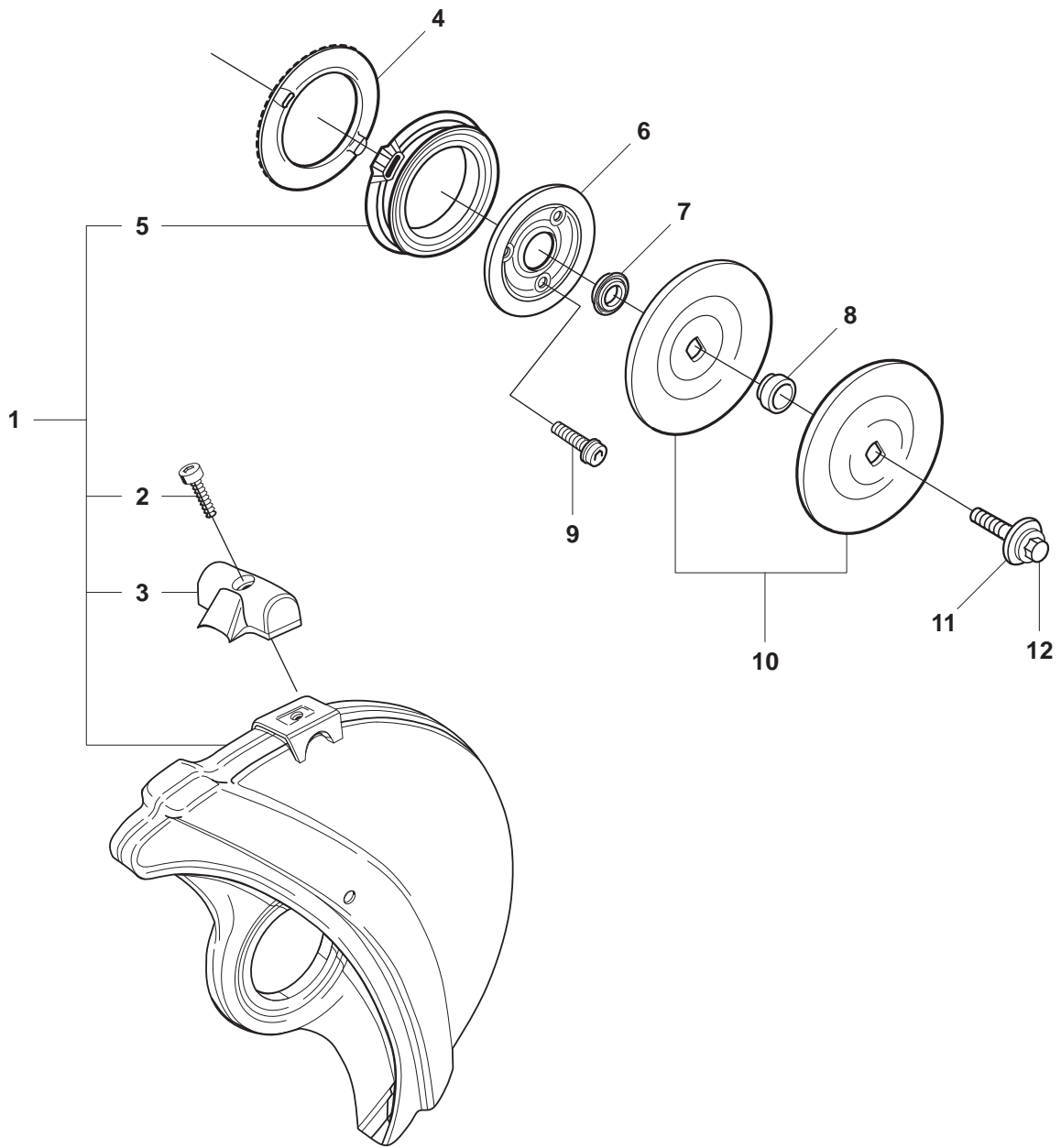
No.	Pos.	Description	No.	Pos.	Description
501 62 89-09	C	HANDLE INSERT	506 29 88-01	F	FILTER
501 69 17-02	G	COMBINATION TOOL	506 30 11-07	D	SEALING
502 21 58-01	G	L-NYCKEL	506 31 77-31	F	VALVE ASSY
503 20 00-45	A	SCREW COLLAR	506 32 00-02	D	SHAFT
503 20 02-12	A	SCREW	506 32 48-01	B	SUPPORT FLANGE
503 20 02-16	C	SCREW	506 32 87-01	F	Y-TUBE
503 20 02-20	D	SCREW	506 34 46-02	B	HANDLE
503 20 02-40	C	SCREW	506 34 67-05	D	KIT
503 20 02-45	D	SCREW	506 35 47-01	A	PULLEY
503 20 13-30	D	SCREW	506 37 27-27	A	BELT
503 20 30-09	A	SCREW	506 37 96-20	B	BUSHING
503 21 06-19	F	SCREW	506 37 96-22	B	BUSHING
503 21 28-10	C	SCREW	506 37 96-25	B	BUSHING
503 22 00-01	A	NUT FLANGE	506 38 59-04	F	HOSE
503 22 65-04	C	NUT	506 38 95-02	B	WHEEL GUARD
503 22 66-01	A	NUT	506 40 43-02	A	BEARING HOUSING
503 23 00-24	D	WASHER STEEL	544 00 31-03	F	WATER HOSE KIT
503 23 01-04	A	WASHER STEEL	544 21 63-01	C	BRACKET
503 23 04-02	C	WASHER	544 42 02-01	D	SEALING
503 240 7-01	D	PIN	720 13 10-00	C	PIN
503 25 21-01	A	BALL BEARING	724 32 19-05	C	SCREW
503 26 30-21	F	O-RING	725 53 27-55	C	SCREW
503 26 60-02	CF	COUPLER	725 53 29-55	B	SCREW
506 01 45-06	C	THROTTLE LOCKOUT	725 53 31-55	BD	SCREW
506 02 87-01	B	FLANGE WASHER	725 53 41-55	C	SCREW
506 02 88-30	B	BUSHING	732 25 12-01	D	NUT
506 03 06-02	A	BELT TENSIONER ASSY	735 31 08-20	D	E-RING
506 03 32-02	A	SCREW	735 31 14-00	D	CIRCLIP
506 07 09-01	B	WASHER	735 31 31-10	D	CIRCLIP
506 09 56-02	F	HOSE CLAMP	735 88 06-00	D	WOODRUFF KEY
506 09 75-02	F	HOSE	738 22 01-25	D	BALL BEARING
506 09 87-02	A	BELT GUARD	740 38 27-01	E	WASHER
506 10 95-02	E	HYDRAULIC HOSE	740 38 34-01	E	WASHER
506 10 96-21	E	QUICK COUPLING FEMALE	740 42 03-00	D	O-RING
506 10 98-21	E	QUICK COUPLING MALE	740 43 02-00	D	O-RING
506 11 03-01	D	O-RING	740 43 11-00	D	O-RING
506 11 05-01	D	BEARING			
506 13 95-11	B	WASHER			
506 13 96-01	B	COLLAR SCREW			
506 19 87-06	D	HYDRAULIC MOTOR			
506 20 16-02	C	HANDLE HALF			
506 20 18-01	A	SPACING SLEEVE			
506 20 27-02	D	SUPPORT FLANGE			
506 20 28-02	C	BELT GUARD			
506 20 29-03	C	FRONT HANDLE			
506 20 31-01	D	LEVER			
506 20 33-01	C	THROTTLE ROD			
506 20 34-03	C	THROTTLE TRIGGER			
506 20 36-02	C	CHASSIS			
506 20 38-01	D	SPRING			
506 21 16-01	D	PULLEY			
506 21 59-01	D	VALVE SPINDLE			
506 21 60-01	D	VALVE SLEEVE			
506 21 80-01	D	VALVE CONE			
506 21 81-01	D	SPRING			
506 21 82-01	D	PLUNGE			
506 21 83-01	D	SPRING			
506 21 85-01	D	VALVE SEAT			
506 21 95-01	A	COMPRESSION SPRING			
506 23 09-03	D	HOUSING			
506 23 35-01	D	HOUSING			
506 26 63-02	B	LINING			
506 26 64-01	B	SCREEN PATTERN FLANG			
506 26 65-01	B	FLANGE			
506 28 41-22	B	LABEL			
506 28 41-24	B	LABEL			
506 28 84-01	A	SCREEN PATTERN FLANG			
506 29 56-01	F	NIPPLE			
506 29 57-02	F	NIPPLE			
506 29 83-71	A	SHAFT			



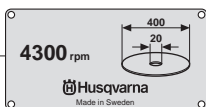
Page A
K2500

Pos.	Part No.	Description	Quantity	Notes
1	506 03 06-02	BELT TENSIONER ASSY	1	Incl. 2, 3, 4
2	506 21 95-01	COMPRESSION SPRING	1	
3	503 22 66-01	NUT	1	
4	503 20 30-09	SCREW	1	
5	503 22 00-01	NUT FLANGE	2	
6	506 09 87-02	BELT GUARD	1	
7	503 20 00-45	SCREW COLLAR	1	
8	506 37 27-27	BELT	1	
9	506 35 47-01	PULLEY	1	
10	503 23 01-04	WASHER STEEL	1	
11	506 40 43-02	BEARING HOUSING	1	
12	506 03 32-02	SCREW	2	
13	506 20 18-01	SPACING SLEEVE	1	
14	503 25 21-01	BALL BEARING	2	
15	506 29 83-71	SHAFT	1	
16	506 28 84-01	SCREEN PATTERN FLANG	1	
17	503 20 02-12	SCREW	1	

B K2500



13

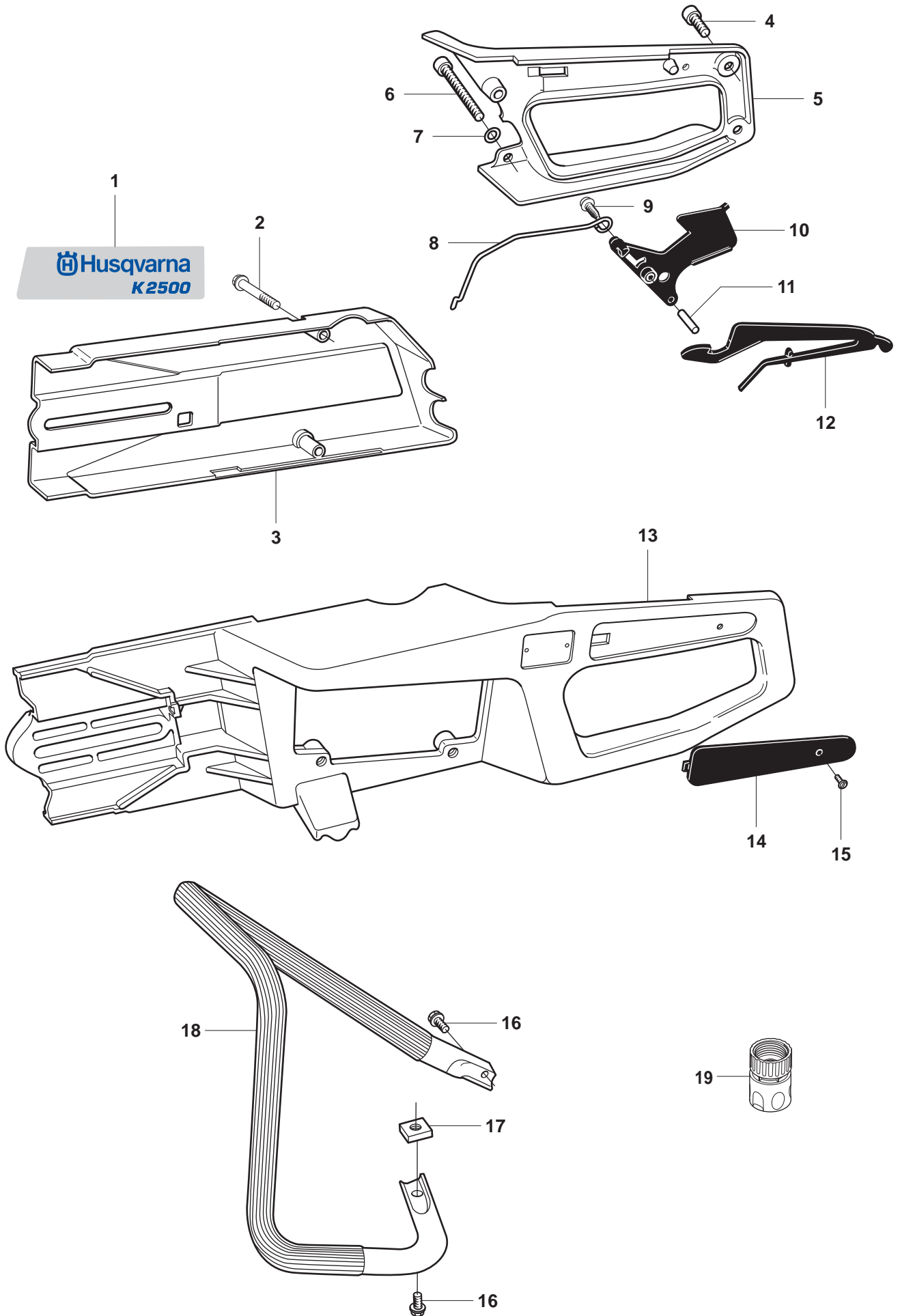


Page B
K2500

Pos.	Part No.	Description	Quantity	Notes
1	506 38 95-02	WHEEL GUARD	1	Incl. 2, 3, 5
2	725 53 31-55	SCREW	1	
3	506 34 46-02	HANDLE	1	
4	506 26 64-01	SCREEN PATTERN FLANG	1	
5	506 26 63-02	LINING	1	
6	506 26 65-01	FLANGE	1	
7	506 32 48-01	SUPPORT FLANGE	1	
8	506 37 96-20	BUSHING	1	Diam 20mm
8	506 37 96-22	BUSHING	1	Diam 22,2mm
8	506 37 96-25	BUSHING	1	Diam 25,4mm
8	506 02 88-30	BUSHING	1	Diam 30,5mm
9	725 53 29-55	SCREW	1	
10	506 02 87-01	FLANGE WASHER	1	Diam 105mm
10	506 07 09-01	WASHER	1	Diam 119mm
11	506 13 95-11	WASHER	1	
12	506 13 96-01	COLLAR SCREW	1	
13	506 28 41-22	LABEL	1	Diam 20mm
13	506 28 41-24	LABEL	1	Diam 25,4mm

C K2500

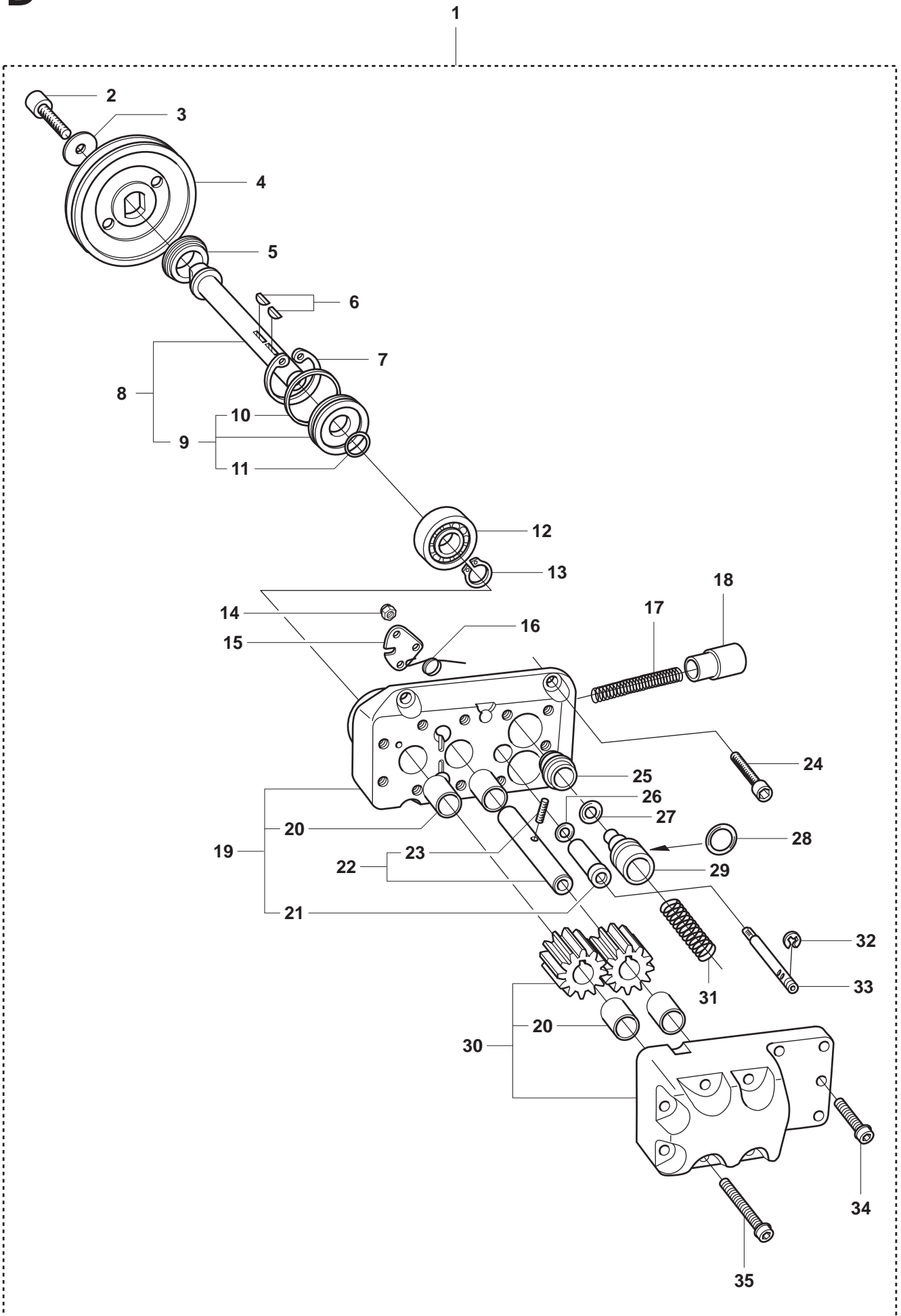
 **Husqvarna**
K2500



Page C
K2500

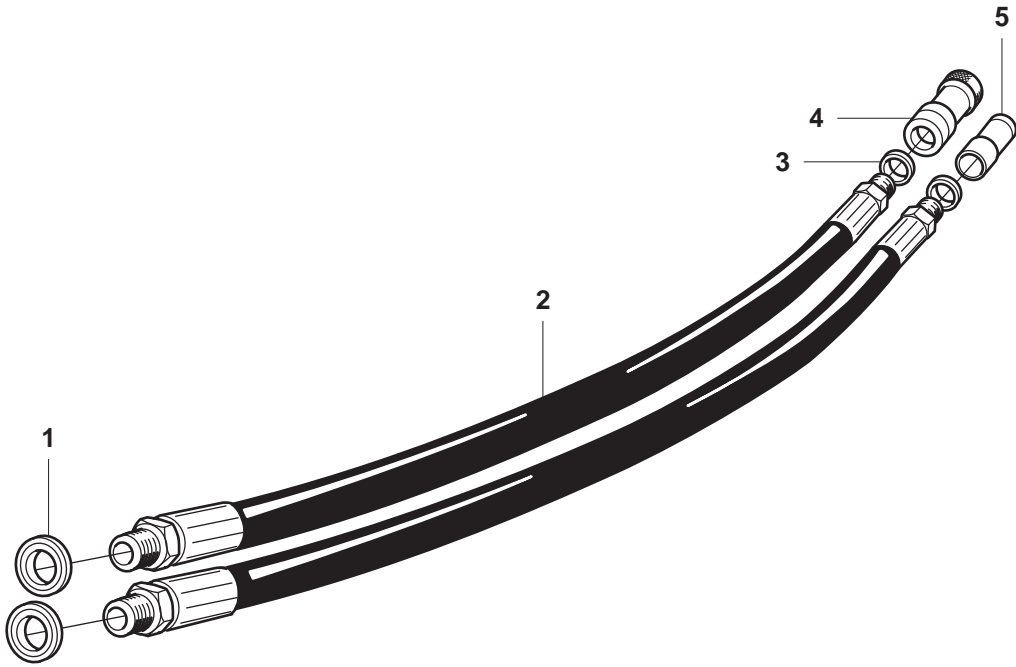
Pos.	Part No.	Description	Quantity	Notes
1	544 21 63-01	BRACKET	1	
2	503 20 02-40	SCREW	2	
3	506 20 28-02	BELT GUARD	1	
4	725 53 27-55	SCREW	2	
5	506 20 16-02	HANDLE HALF	1	
6	725 53 41-55	SCREW	1	
7	503 23 04-02	WASHER	1	
8	506 20 33-01	THROTTLE ROD	1	
9	503 21 28-10	SCREW	1	
10	506 20 34-03	THROTTLE TRIGGER	1	
11	720 13 10-00	PIN	1	
12	506 01 45-06	THROTTLE LOCKOUT	1	
13	506 20 36-02	CHASSIS	1	
14	501 62 89-09	HANDLE INSERT	2	
15	724 32 19-05	SCREW	2	
16	503 20 02-16	SCREW	2	
17	503 22 65-04	NUT	1	
18	506 20 29-03	FRONT HANDLE	1	
19	503 26 60-02	COUPLER	1	

D K2500



Page D
K2500

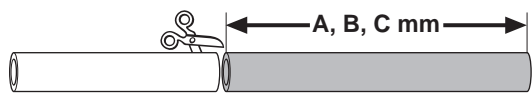
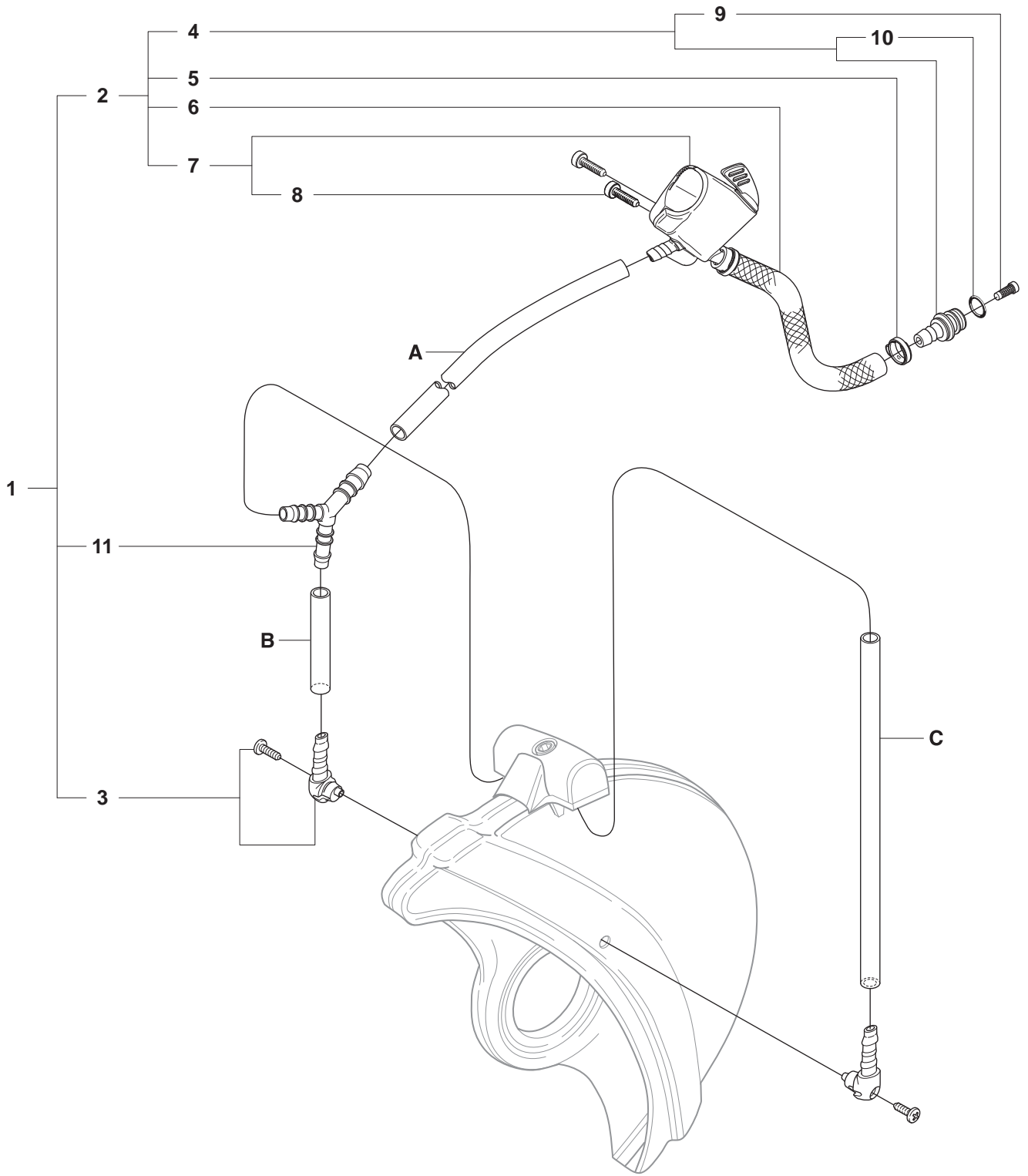
Pos.	Part No.	Description	Quantity	Notes
1	506 19 87-06	HYDRAULIC MOTOR	1	Incl. 2 - 36
2	503 20 13-30	SCREW	1	
3	503 23 00-24	WASHER STEEL	1	
4	506 21 16-01	PULLEY	1	
5	506 20 27-02	SUPPORT FLANGE	1	
6	735 88 06-00	WOODRUFF KEY	2	
7	735 31 31-10	CIRCLIP	1	
8	506 34 67-05	KIT	1	Incl. 9
9	506 30 11-07	SEALING	1	Incl. 10, 11
10	506 11 03-01	O-RING	1	
11	544 42 02-01	SEALING	1	
12	738 22 01-25	BALL BEARING	1	
13	735 31 14-00	CIRCLIP	1	
14	732 25 12-01	NUT	1	
15	506 20 31-01	LEVER	1	
16	506 20 38-01	SPRING	1	
17	506 21 83-01	SPRING	1	
18	506 21 82-01	PLUNGE	1	
19	506 23 35-01	HOUSING	1	Incl. 20, 21
20	506 11 05-01	BEARING	4	
21	506 21 60-01	VALVE SLEEVE	1	
22	506 32 00-02	SHAFT	1	Incl. 23
23	503 240 7-01	PIN	1	
24	725 53 31-55	SCREW	4	
25	506 21 85-01	VALVE SEAT	1	
26	740 43 02-00	O-RING	1	
27	740 42 03-00	O-RING	1	
28	740 43 11-00	O-RING	1	
29	506 21 80-01	VALVE CONE	1	
30	506 23 09-03	HOUSING	2	Incl. 20
31	506 21 81-01	SPRING	1	
32	735 31 08-20	E-RING	1	
33	506 21 59-01	VALVE SPINDLE	1	
34	503 20 02-20	SCREW	5	
35	503 20 02-45	SCREW	6	



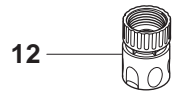
Page E
K2500

Pos.	Part No.	Description	Quantity	Notes
1	740 38 27-01	WASHER	2	
2	506 10 95-02	HYDRAULIC HOSE	2	
3	740 38 34-01	WASHER	2	
4	506 10 96-21	QUICK COUPLING FEMALE	1	
5	506 10 98-21	QUICK COUPLING MALE	1	

F K2500



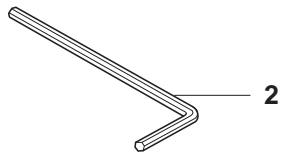
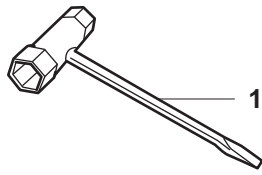
Product		A (mm)	B (mm)	C (mm)
K2500	16"	270	45	360



Page F
K2500

Pos.	Part No.	Description	Quantity	Notes
1	544 00 31-03	WATER HOSE KIT	1	Incl. 2, 3, 11
2	506 38 59-04	HOSE	1	Incl. 4, 5, 6, 7
3	506 29 56-01	NIPPLE	2	
4	506 29 57-02	NIPPLE	1	Incl. 9
5	506 09 56-02	HOSE CLAMP	2	
6	506 09 75-02	HOSE	1	L=230mm
7	506 31 77-31	VALVE ASSY	1	Incl. 8
8	503 21 06-19	SCREW	2	
9	506 29 88-01	FILTER	1	
10	503 26 30-21	O-RING	1	
11	506 32 87-01	Y-TUBE	1	
12	503 26 60-02	COUPLER	1	

G K2500
Accessories
Zubehöre
Accessoires
Acessorios
Tillbehör



Page G

K2500

Pos.	Part No.	Description	Quantity	Notes
1	501 69 17-02	COMBINATION TOOL	1	
2	502 21 58-01	L-NYCKEL	1	